

Solid Platinum Value



Eligible First Home Owners pay only \$128,950.

\$149,950

The Platinum family home comes complete with a huge array of lifestyle inclusions:

- 900mm stainless steel rangehood
- 900mm stainless steel oven
- 900mm stainless steel hotplate
- Tiled splashback to hotplate
- Dishwasher recess
- China basins
- Pivot glass shower screens
- Doors to robes in beds 2, 3 & 4
- 45 litre stainless steel laundry trough
- 1m laminated laundry cupboards
- Double GPO's
- China toilet suites
- Colorbond roof
- Brick paved driveway & path

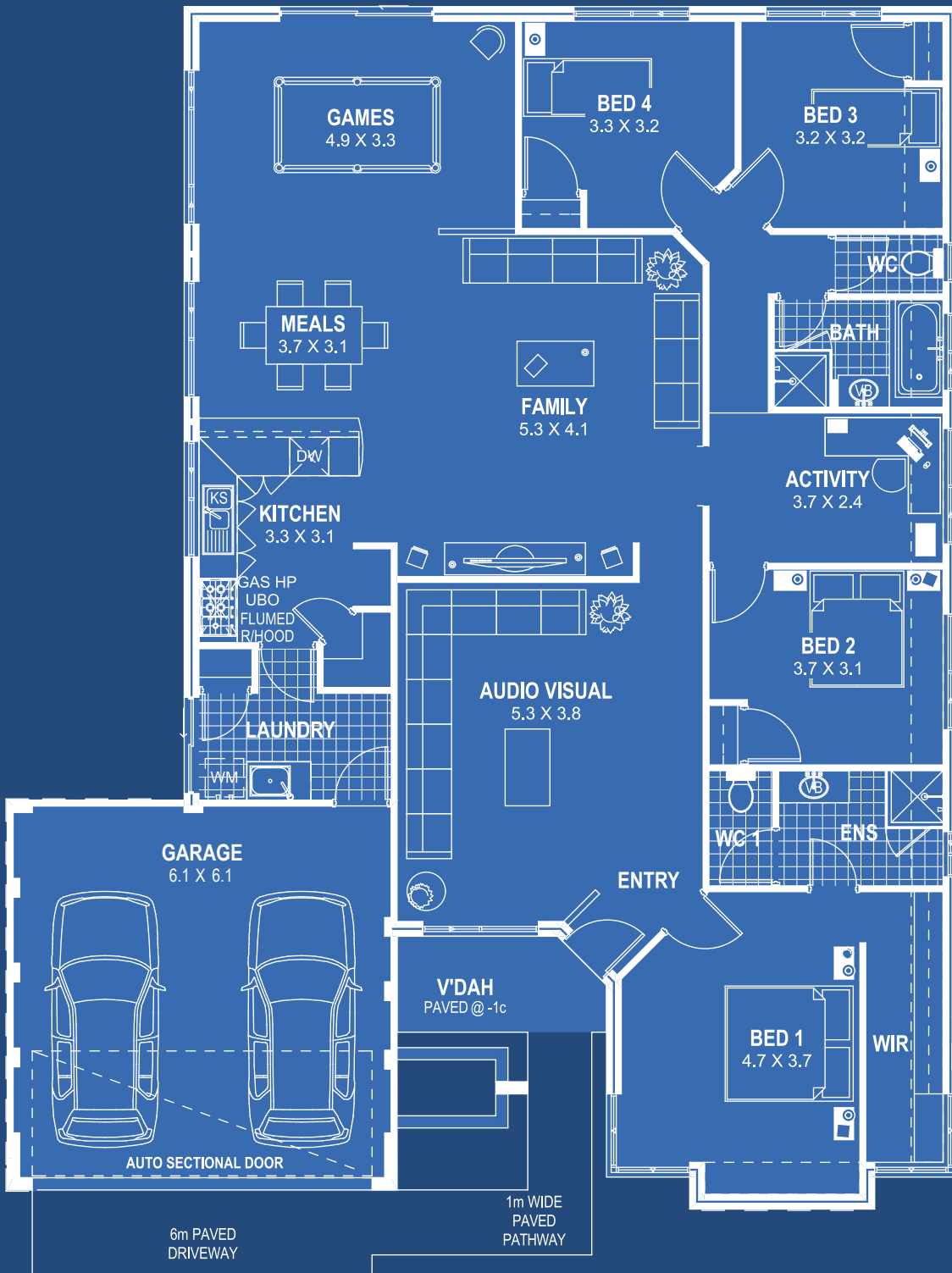
† Average construction time frames from slab down to practical completion for previous 12 months

Talk to us today - call:

6241 4840

www.blueprinthomes.com.au

blueprint
HOMES



Total Area: 248m²

Display Centres

See www.blueprinthomes.com.au for full directions.

The Boston: Pemberton Boulevard - Baldivis Central. **The Aspen:** Landbeach Boulevard - Butler (by appt.) **The Monterey:** Ewens Pass - Ellenbrook. **The Miami:** Barcoo Bend - Hammond Park. **The Santa Fe:** Cohen Vista - Lakelands/Mandurah. **The Sierra:** Belcastro Way - Madeley. **The Capri:** Broadstone Vista - Meadow Springs (by appt.) **The Manhattan:** Chicago Street - Southern River. **The Montebello:** Cape Meander, Baldivis. **The Argyle:** Columbia Parkway, Piara Waters.